

[www.kobel.com](http://www.kobel.com)

DATE: \_\_\_\_\_

### CONTACT DETAILS

NAME: \_\_\_\_\_  
COMPANY: \_\_\_\_\_  
ADDRESS: \_\_\_\_\_  
PROJECT REFERENCE: \_\_\_\_\_

E-MAIL: \_\_\_\_\_  
PHONE: \_\_\_\_\_ (\_\_\_\_\_) \_\_\_\_\_  
FAX: \_\_\_\_\_ (\_\_\_\_\_) \_\_\_\_\_  
YARD: \_\_\_\_\_  
HULL NBR: \_\_\_\_\_

### VESSEL DATA

Please check  where applicable.

TYPE \_\_\_\_\_ LENGTH \_\_\_\_\_ DRAFT \_\_\_\_\_  
HULL  DISPLACEMENT  PLANING  CATAMARAN  OTHER \_\_\_\_\_  
CLASS APPROVAL SOCIETY \_\_\_\_\_ NOTATION \_\_\_\_\_  
SPEED CRUISING (knots) \_\_\_\_\_ MAXIMUM (knots) \_\_\_\_\_ ESTIMATED (knots) \_\_\_\_\_  
PROPELLER DIAMETER \_\_\_\_\_ (mm or inches) PITCH \_\_\_\_\_ (mm or inches) REDUCT. GEAR RATIO \_\_\_\_\_  
ENGINE QTY. \_\_\_\_\_ x \_\_\_\_\_ HP @ \_\_\_\_\_ R.P.M.  
IDLE R.P.M. \_\_\_\_\_ RUNNING R.P.M. \_\_\_\_\_ MAXIMUM R.P.M. \_\_\_\_\_

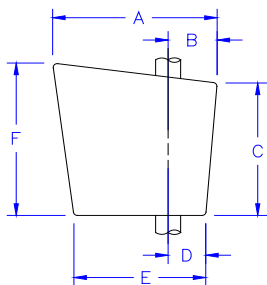
### RUDDER DATA

Please check  where applicable.

Torque Per Rudder: If Known

RUDDER ANGLE  2 x 35 DEGREES  OTHER 2 x \_\_\_\_\_ (from Midships to Hardover)  NOZZLE  
RUDDER SHAFT DIAMETER AT TILLER \_\_\_\_\_ (mm or inches)  STRAIGHT  TAPER  
RUDDER SHAFT RULE REQUIRED UPPER RUDDER STOCK DIAMETER (IF APPLICABLE): \_\_\_\_\_ (mm or inches)  
NUMBER OF RUDDERS \_\_\_\_\_ DISTANCE BETWEEN RUDDER SHAFTS \_\_\_\_\_ (mm or inches)

DIMENSIONS and counter balance of rudder - please provide sketch



(mm/inch)  
A \_\_\_\_\_ D \_\_\_\_\_  
B \_\_\_\_\_ E \_\_\_\_\_  
C \_\_\_\_\_ F \_\_\_\_\_

RECOMMEND COUNTER  
BALANCE (average of B & D)

24 to 26% FOR DISPLACEMENT HULLS  
20 to 22% FOR SEMI-PLANING  
16 to 18% FOR PLANING HULLS

### STEERING SYSTEM DATA

Please check  where applicable.

MODE  HAND HYDRAULIC  JOG (NFU)  HYDRAULIC FFU  ELECTRIC FFU  
STEERING STATIONS NUMBER \_\_\_\_\_ LOCATION(S) \_\_\_\_\_  WHEEL  LEVER  
LENGTH OF TUBING RUN FROM WHEELHOUSE TO STEERING GEAR \_\_\_\_\_ (M or Ft)  
HYDRAULIC POWER SOURCE  ENGINE DRIVEN  ELECTRIC MOTOR  
NUMBER OF PUMPS \_\_\_\_\_ HARDOVER TIME \_\_\_\_\_ (in seconds)  
ENGINE SAE FLANGE SIZE \_\_\_\_\_ PUMP ROTATION (View from the pump shaft end) \_\_\_\_\_  
SHAFT INTERFACE \_\_\_\_\_ RUDDER SPEED REQUIRED AT WHAT RPM \_\_\_\_\_  
ELECTRIC MOTOR \_\_\_\_\_ (VAC/PH/Hz) SOLENOID VOLTAGE \_\_\_\_\_ DC  
INTERFACE REQUIRED (AUTOPILOT, DYNAMIC POSITIONING, JOYSTICK) \_\_\_\_\_  
RUDDER ANGLE INDICATOR LOCATION \_\_\_\_\_ VOLTAGE \_\_\_\_\_  
REQUIRED DELIVERY DATE \_\_\_\_\_

COMMENTS: \_\_\_\_\_

ADDITIONAL INFORMATION ATTACHED?  YES  NO