

# 5021-H | HYDRAULIC APPLIED CALIPER DISC BRAKE



## KEY BENEFITS

Bronze & stainless steel construction

Easily changed brake pads

Well matched to Kobelt's standard range of 2" ventilated discs

## Putting you in control.

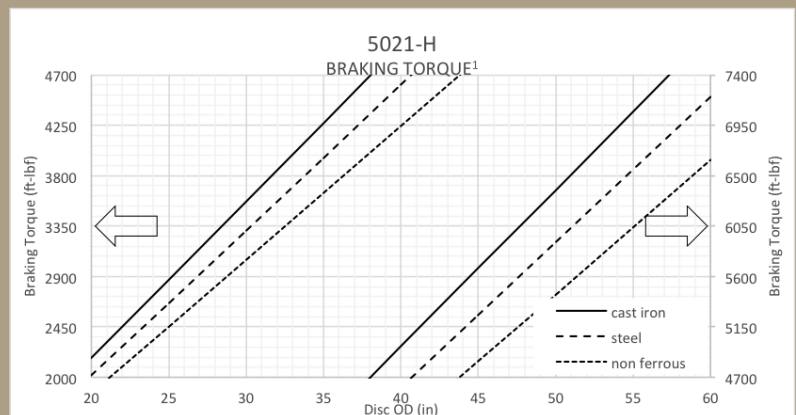
For over three decades, Kobelt has been manufacturing rugged, durable disc brakes for the oil and gas, mining, material handling and manufacturing industries. Constructed of bronze and stainless steel, Kobelt's disc brakes are built to last in the harshest conditions.

Available with several options, these caliper disc brakes are well suited for service braking applications on uncoilers, paper machines and more.



## SPECIFICATIONS

|                        |                                 |             |
|------------------------|---------------------------------|-------------|
| Normal Force:          | 0...4100 lbs                    | [18.2 KN]   |
| Maximum Pressure:      | 1000 psi                        | [69 bar]    |
| Port Size:             | -4 ORB                          |             |
| Actuator Volume:       | .6 in <sup>3</sup>              | [10 cc]     |
| Temperature Range:     | -40°F...+120°F<br>-40°C...+49°C |             |
| Disc Thickness:        | 2 in                            | [51 mm]     |
| Minimum Disc Diameter: | 20 in                           | [508 mm]    |
| Maximum Disc Diameter: | unlimited <sup>2</sup>          |             |
| Pad Life:              | 1045 hp-hr                      | [779 kw-hr] |
| Weight:                | 46 lbs                          | [20.9 kg]   |

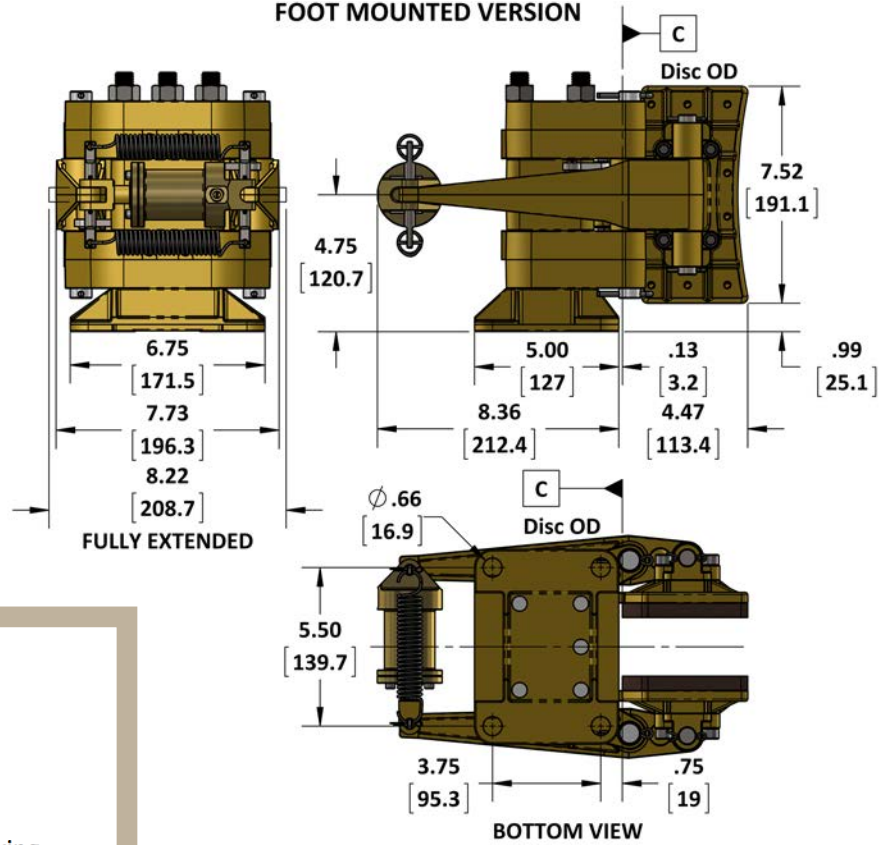


<sup>1</sup> Values in this chart are theoretical and for reference only. They are based on properly bedded and burnished linings acting on a rotor at 20°C and manufactured to required specifications.

<sup>2</sup> Requires a minimum 4.34 in [110 mm] wide face.

# SPECIFICATIONS

## FOOT MOUNTED VERSION



### Brake Model Code Key

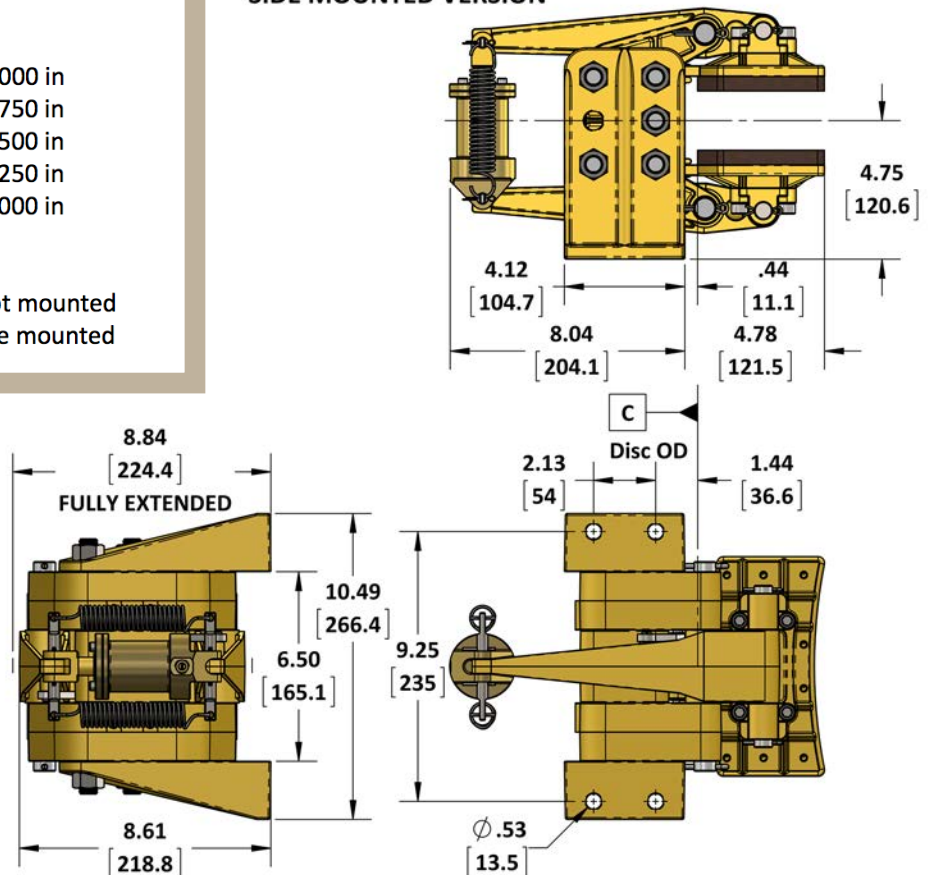
5021-H  -  -

Friction material  
 (blank) = standard  
 N = non-sparking  
 C = low COF (.12-.15)  
 E = mid COF (.25-.28)

Disc thickness  
 (blank) = 2.000 in  
 175 = 1.750 in  
 150 = 1.500 in  
 125 = 1.250 in  
 100 = 1.000 in

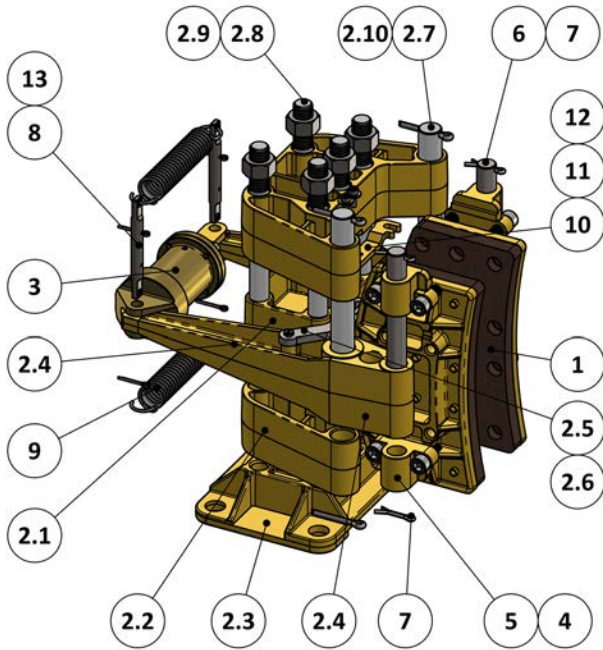
Mounting code  
 (blank) = foot mounted  
 W = side mounted

## SIDE MOUNTED VERSION

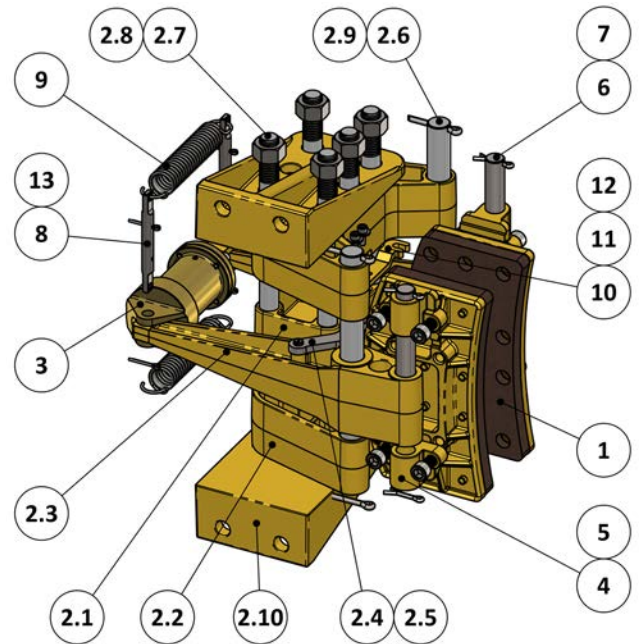


# PARTS LISTING

## 5021-H Caliper Brake



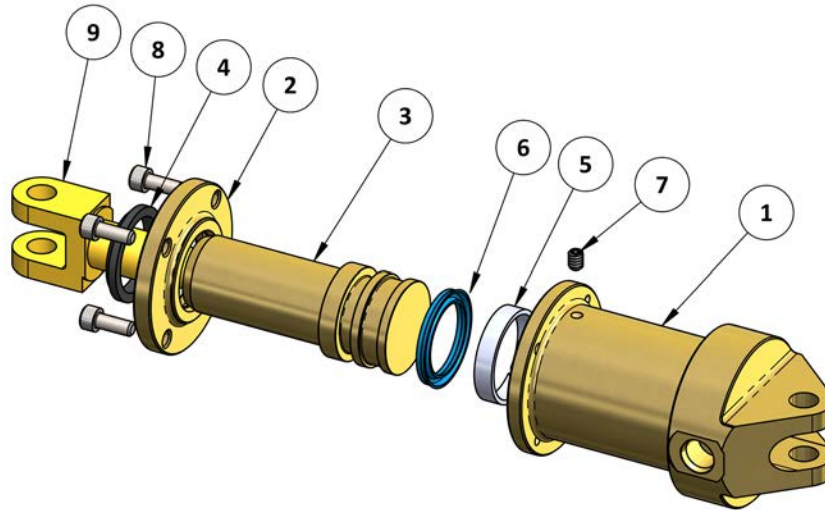
## 5021-HW Caliper Brake



| ITEM | QTY. | PART NUMBER | 5021-H DESCRIPTION   |
|------|------|-------------|--|
| 1    | 2    | 5021-LS     | SHOE ASSEMBLY, 5021 CALIPER, 1/2" K5                       |
| 2    | 1    | 5021-SUB    | SUB-ASSEMBLY, 5021 CALIPER                                 |
| 2.1  | 1    | 5021-0003   | SPACER, 5021 CALIPER                                       |
| 2.2  | 2    | 5021-0002   | SADDLE, 5021 CALIPER                                       |
| 2.3  | 1    | 5021-0001   | FOOT, 5021 CALIPER   |
| 2.4  | 2    | 5021-0004   | LEVER, 5021 CALIPER  |
| 2.5  | 2    | 5021-0011   | BALANCING LINK, PART 1, 5021 CALIPER                       |
| 2.6  | 2    | 5021-0226   | LINK PIN, 5/16NC X 7/8 LG                                  |
| 2.7  | 2    | 5021-0022   | SADDLE PIN, 5021 CALIPER                                   |
| 2.8  | 5    | 5021-0023   | TIE ROD, 5/8-11NC  |
| 2.9  | 5    | 1022-0116   | REG HEX NUT 5/8-11 NC, GR 18-8                             |
| 2.10 | 4    | 1026-0824   | COTTER PIN, 3/16 X 1 1/2                                   |
| 3    | 1    | 6112-H      | HYDRAULIC ACTUATOR. 1200 LBS                               |
| 4    | 8    | 1002-1216   | SCREW, SKT HD CAP, 3/8-16 UNC X 1, SS                      |
| 5    | 4    | 5021-0006   | PIVOT BLOCK, 5021 CALIPER                                  |
| 6    | 2    | 5021-0021   | SHOE PIN, 5021 CALIPER                                     |
| 7    | 4    | 1026-0516   | COTTER PIN, 1/8" X 1", SS                                  |
| 8    | 2    | 6112-0107   | CLEVIS PIN, 6112-H ACTUATOR                                |
| 9    | 2    | 1202-0009   | SPRING, EXTENSION, 0.83 OD X .080 WIRE, AISI 302, 14 TURNS |
| 10   | 2    | 5021-0012   | BALANCE LINK NO. 2, 5021 CALIPER                           |
| 11   | 4    | 1002-0808   | SCREW, SKT HD CAP, #10-24 UNC x 1/2 LG, SS                 |
| 12   | 4    | 1023-0108   | WASHER, FLAT, #10, TYPE A, SS                              |
| 13   | 4    | 1026-0312   | COTTER PIN, 3/32" X 3/4", SS                               |

| ITEM | QTY. | PART NUMBER | 5021-HW DESCRIPTION  |
|------|------|-------------|--|
| 1    | 2    | 5021-LS     | SHOE ASSEMBLY, 5021 CALIPER, 1/2" K5                       |
| 2    | 1    | 5021-SUB-W  | SIDE MOUNT SUB-ASSEMBLY, 5021 CALIPER                      |
| 2.1  | 1    | 5021-0003   | SPACER, 5021 CALIPER                                       |
| 2.2  | 2    | 5021-0002   | SADDLE, 5021 CALIPER                                       |
| 2.3  | 2    | 5021-0004   | LEVER, 5021 CALIPER  |
| 2.4  | 2    | 5021-0011   | BALANCING LINK, PART 1, 5021 CALIPER                       |
| 2.5  | 2    | 5021-0226   | LINK PIN, 5/16NC X 7/8 LG                                  |
| 2.6  | 2    | 5021-0022   | SADDLE PIN, 5021 CALIPER                                   |
| 2.7  | 5    | 5021-0023   | TIE ROD, 5/8-11NC  |
| 2.8  | 10   | 1022-0116   | REG HEX NUT 5/8-11 NC, GR 18-8                             |
| 2.9  | 4    | 1026-0824   | COTTER PIN, 3/16 X 1 1/2                                   |
| 2.10 | 2    | 5021-0101   | SIDE MOUNT BRACKET, 5021 CALIPER                           |
| 3    | 1    | 6112-H      | HYDRAULIC ACTUATOR. 1200 LBS                               |
| 4    | 4    | 5021-0006   | PIVOT BLOCK, 5021 CALIPER                                  |
| 5    | 8    | 1002-1216   | SCREW, SKT HD CAP, 3/8-16 UNC X 1, SS                      |
| 6    | 2    | 5021-0021   | SHOE PIN, 5021 CALIPER                                     |
| 7    | 4    | 1026-0516   | COTTER PIN, 1/8" X 1", SS                                  |
| 8    | 2    | 6112-0107   | CLEVIS PIN, 6112-H ACTUATOR                                |
| 9    | 2    | 1202-0009   | SPRING, EXTENSION, 0.83 OD X .080 WIRE, AISI 302, 14 TURNS |
| 10   | 2    | 5021-0012   | BALANCE LINK NO. 2, 5021 CALIPER                           |
| 11   | 4    | 1002-0808   | SCREW, SKT HD CAP, #10-24 UNC x 1/2 LG, SS                 |
| 12   | 4    | 1023-0108   | WASHER, FLAT, #10, TYPE A, SS                              |
| 13   | 4    | 1026-0312   | COTTER PIN, 3/32" X 3/4", SS                               |

## 6112-H Actuator



| ITEM | QTY. | PART NUMBER | 6112-H DESCRIPTION                                  |
|------|------|-------------|---|
| 1    | 1    | 6112-0201   | CYLINDER, 6112-H ACTUATOR                           |
| 2    | 1    | 6112-0202   | END CAP, 6112-H ACTUATOR                            |
| 3    | 1    | 6112-0103   | PISTON, 6112-H ACTUATOR                             |
| 4    | 1    | 1102-6015   | WIPER, AN, 1" ID                                    |
| 5    | 1    | 1102-9205   | WEAR RING, 1.25" OD X .062" THK X 0.25" WIDE, NYLON |
| 6    | 1    | 1102-2009-H | SEAL, PISTON, U-CUP, 1-1/4" X 1" X 1/8"             |
| 7    | 1    | 1016-0804   | SET SCREW 10-24 X 1/4, SS                           |
| 8    | 4    | 1002-0808   | SCREW, SKT HD CAP, #10-24 UNC x 1/2 LG, SS          |
| 9    | 1    | 6212-0005S  | CLEVIS, 6212 ACTUATOR, SHORT                        |

Note: Parts lists are applicable to standard models only.