



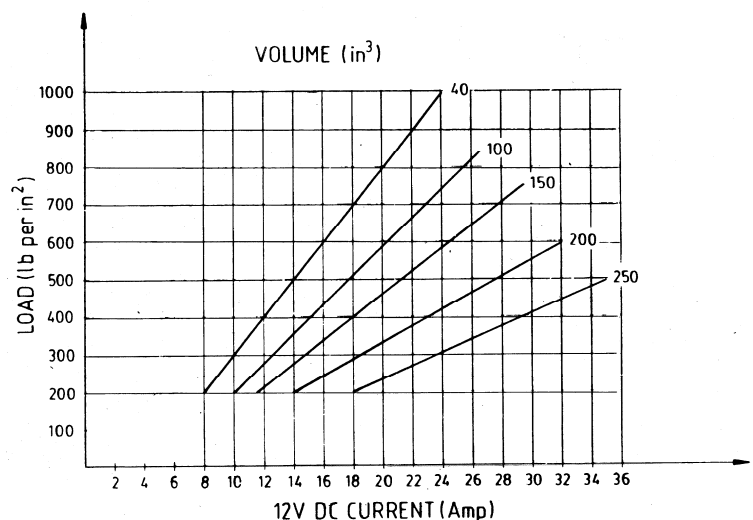
MODEL 7201 AUTOPILOT HYDRAULIC PUMP

In a manual hydraulic steering system, a source of hydraulic pressure is required to make the autopilot operational. The **7201** is specifically designed for this purpose. It is available with either 12 or 24 volt DC motors and is intended for intermittent use only. The pump itself could be used on a continuous basis, but the motor would overheat if the pump is set on a high volume and a relatively high pressure. The maximum current that the motor can handle on an intermittent basis is approximately 30 amps for a 12 volt motor and 15 amps for a 24 volt motor. We do, however, recommend that the motor should not draw any current more than 16 amps for the 12 volt motor and 8 amps for the 24 volt motor. The graph on the right indicates the capabilities of the motor. The pump can also be used on a more powerful motor to produce one gallon per minute at up to 2,000 psi on a relatively continuous basis.

Adjustable safety valves for both port and starboard are provided and also flow control screws provide adjustment for the variable delivery from 40 to 250 cu. in. per minute. Upon special request, the volume

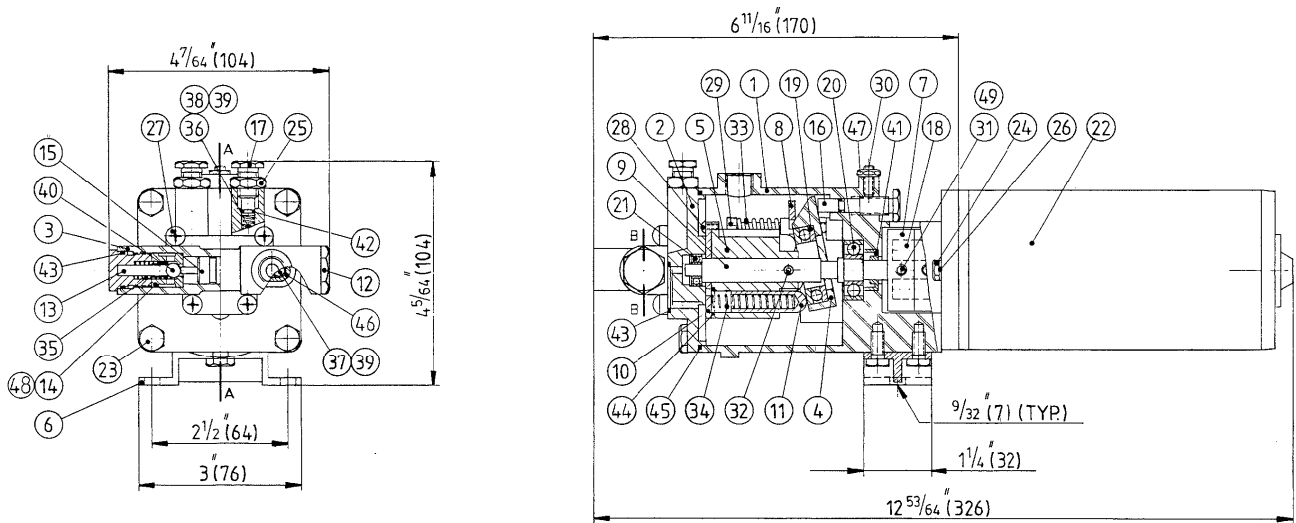
could be increased to 300 cubic inches per minute. The lock valve fitted on the pump is to prevent hydraulic feedback from the steering system.

Both pump and motor are equipped with ball bearings. The pump is made of silicon bronze, stainless steel hardware with hardened steel pistons and wear-plate.



DIMENSIONS AND PARTS LIST

MODEL 7201



All dimensions in inches (mm)

ITEM	QTY	PART NUMBER	DESCRIPTION	ITEM	QTY	PART NUMBER	DESCRIPTION
1	1	7201-0001	Pump Housing	25	2	1022-0262	Hex Jam Nut
2	1	7201-0002	End Cap	26	2	1023-0308	Lock Washer #10
3	1	7201-0003	Lock Valve Body	27	4	1010-0806	Round Hd Philip Screw
4	1	7201-0004	Thrust Bearing Retainer	28	5	1012-0606	Round Hd Philip Screw
5	1	7201-0005	Rotor	29	2	1002-0832	Hex Socket Hd Cap Screw
6	1	7201-0006	Foot	30	1	1016-0808	Hex Socket Set Screw
7	2	7201-0007	Half Coupling	31	1	1016-1004	Hex Socket Set Screw
8	1	7201-0008	Retainer	32	1	1040-0810	Spring Pin
9	1	7201-0009	Shaft	33	2	1201-0180	Spring - Retainer
10	1	7201-0010	Suction Plate	34	5	1201-0184	Spring - Piston
11	5	7201-0011	Piston	35	2	1201-0171	Spring
12	2	7003-0025	End Cap	36	2	1201-0182	Spring - Pressure Relief
13	2	7003-0024	Pin	37	2	1201-0183	Spring - suction
14	2	7003-0026	Ball Seat	38	2	7201-0014	Ball Seat
15	1	7201-0015	Shuttle	39	4	1301-0107	Ball
16	1	7201-0016	Volume Adjusting Screw	40	2	1301-0110	Ball
17	2	7201-0017	Pressure Relief Valve	41	1	7201-3680	Seal
18	4	7201-0018	Drive Plug	42	3	1101-0006	"O" Ring
19	1	7201-51104	Thrust Bearing Retainer	43	3	1101-0015	"O" Ring
20	1	7201-6000	Ball Bearing	44	5	1101-0012	"O" Ring
21	1	7201-6962	Ball Bearing	45	1	1101-0039	"O" Ring
22	1*	7201-12MT	Electric Motor 12VDC	46	2	1101-0017	"O" Ring
22	1*	7201-24MT	Electric Motor 24VDC	47	1	1022-0108	Hex Nut
23	6	1001-1008	Hex Bolt	48	2	7003-0031	Spring Seat
24	2	1001-0810	Hex Bolt	49	1	1016-1006	Hex Socket Set Screw

* quantity varies with option